



A fourth T H WHITE solar installation



Fiat Fullback Cross: rugged lifestyle pickup



Revolutionary golf car with lithium technology

PLUS extensive choice of quality used equipment, machinery, vehicles and outstanding clearance items...

- AGRICULTURE
- PROJECTS
- GROUND CARE
- DAIRY
- COUNTRY STORE
- TRAILER CENTRE
- LORRY CRANES
- CONSTRUCTION
- MOTOR GROUP
- ENERGY, FIRE & SECURITY
- ONLINE STORE
- MACHINERY IMPORTS



Course Manager Matthew James (right) and Groundsman David Lacey with Cumberwell Park's two Wiedenmann aerators in front of the dramatic island green 8th hole.

GROUND CARE

ACHIEVING EXCEPTIONAL GREENS AT ONE OF ENGLAND'S LARGEST GOLF COURSES

Cumberwell Park is Wiltshire's only 45-hole golf course and is certainly among the largest courses in southern England. What makes it even more unusual is the fact that it has always been owned and operated by the James family, ensuring not only a warm welcome for members, guests and visitors, but also bringing great attention to detail in creating and maintaining a course that is highly rewarding to play.

The newest addition at Cumberwell Park is a spectacular 9-hole Par 3 course which offers some great challenges to golfers in a superb setting, but it has added considerably to the task facing the 20-strong groundcare team led by Matthew James. To ensure that all 45 greens across the five 9-hole courses are maintained to the highest standard the Club has recently purchased a second Wiedenmann aerator from Stuart Fry at T H WHITE.

Matt James explains: "Regular deep spiking and deep aeration are important for healthy grass root growth, allowing the roots to penetrate deeper into the soil and thus make better use of water and nutrients. Around 10 years ago T H WHITE supplied us with a Wiedenmann GXi6 aerator which more than proved its capability and worth. Four years ago we upgraded to a Wiedenmann GXi8 which is 1.8m wide and has eight tines – compared to the 1.4m width and six tines of the GXi6. That's important for us as it speeds up our work considerably. When we decided a second aerator would be essential to keep the additional greens in prime condition we went back to T H WHITE for another GXi8.

"Nine members of our

team are regularly using the two aerators and they love them! Tine changing is really quick and easy thanks to Wiedenmann's exclusive 'QuickFit' System, meaning we can instantly fit the best tines for the job which tend to be 8mm tines – occasionally with core tines – on the greens in summer and 12mm solid tines in the winter to provide enhanced drainage and aeration.

"Settings and depth control are all done with easy-to-use levers unlike many other machines where you have to fiddle around with nuts and bolts, and there are just six greasing points to take care of. All this enables us to work efficiently and we have been using the new GXi8 on tees, surrounds and approaches as well as the greens. What more could we ask?!"

Testimony to the quality of groundcare at Cumberwell park is provided by the fact that is one of the select clubs chosen for the PGA Europro Tour and it has become a firm favourite among the players. If you are interested in raising the quality of your turf to these exceptional levels, find out what a Wiedenmann TerraSpike aerator can do for you by contacting your nearest T H WHITE Groundcare branch.



News and information from the T H WHITE Group

T H WHITE GROUP

GROUP		
WHITE'S WORLD		
White's World is published monthly by T H WHITE. To contact our Divisions, call:		
Agriculture Knockdown	01454 238181	
Marlborough	01672 512328	
Frome	01373 465941	
Huntley	01452 830303	
Toddington	01242 620211	
Devizes	01380 722381	
Andoversford	01451 850363	
Stockbridge	01264 811260	
Projects	01380 723040	
Groundcare Knockdown	01454 238181	
Reading	0118 976 0088	
Redditch	01527 597770	
Stockbridge	01264 811260	
Dairy	Frome 01373 465941	
	Huntley 01452 830303	
Country Store	Marlborough 01672 518408	
	Knockdown 01454 238181	
Trailer Centre	0118 976 0088	
Lorry Cranes	01380 722381	
Construction	01672 512328	
Motor Group	01793 680480	
Energy, Fire & Security	01380 726656	
Online Store	www.thwhitestore.co.uk	
Machinery Imports	01264 811260	
www.thwhite.co.uk head_office@thwhite.co.uk © T H WHITE Group 2017 E&OE Nursteed Road Devizes Wilts SN10 3EA 01380 722381		

AGRICULTURE



A BRUTE THAT HIDES ITS TALENTS

If you need torque and pulling power from your ATV, then the Camouflage Kawasaki Brute Force 750 is the machine for you!

Its powerful twin cylinder water cooled engine is super smooth AND economical. Push button controls feature diff lock, 2wd and 4wd, and the automatic transmission is operated by one single

forward and reverse lever with low range.

The comfortable seat, wide heavy duty foot plates and effortless power steering make riding the Brute Force less tiring over longer periods and the smart 'real tree' panels allow it to blend into the landscape.

All types of terrain are soaked up by all-round independent suspension, while front and rear disc brakes bring remarkable stopping power. We like the open chassis and light alloy wheels which make it easy to clean and won't trap dirt.

All-in-all a great package from Kawasaki, backed by a two-year warranty. With a competitive list price of only £7,929 plus vat, there is a lot to recommend the Brute Force.

To find out more please contact Tim Rochfort on 07973 911934, or Simon Knight on 07860 712963.

LET THERE BE LIGHT!



As early dusk and dark winter evenings approach, you might be grateful for some extra working light around the yard and when tending livestock.

T H WHITE Toddington is supplying these great lighting bars in varying widths, with integral spot and flood lights. They can be easily mounted with adjustable brackets to ATVs, UTVs or work vehicles and come in three widths, 386mm (72w), 593mm (120w) and 1103mm (240w).

Prices start from just £56.00 plus vat. An optional switch and wiring loom is available. Please contact the Toddington branch on 01242 622773.

WHITE'S WORLD ONLINE

WHITE'S WORLD is also available in digital form where stories can easily be reviewed by division. In the digital edition we also include news, offers and invitations which may not be covered in the printed magazine.

To sign up for digital updates, please visit www.thwhite.co.uk/whites-world-signup/. We will then send you a monthly email with links to all the top stories and offers, which you will receive before the printed copies arrive. You will have the option to unsubscribe at any time.

MEET US AT THE SHOWS...

LAMMA East of England Showground, Peterborough, 17-18 January 2018.
PROJECTS

LORRY CRANES



A BIG LIFT

The T H WHITE Lorry Cranes aftersales department will again see its already excellent customer service capabilities further increased thanks to a significant investment by the Group.

Following continued growth of the Lorry Cranes division, the decision was taken to replace the existing Megalift in the Parts department and replace it with a brand new automated vertical lift, the Shuttle XO-500 from Kardexremstar.

The original Megalift was near the limit of its capacity and as the 15-year-old machine is no longer in production, replacement parts would soon have become a problem.

High-tech infrastructure is used by the parts department to store hundreds of different components for Palfinger, Orteco and Isoli crane systems, with an electronic lift freeing-up floor and rack space in the workshop. The old machine had a footprint of four square metres with an internal capacity of 64 cubic metres, while the new XO-500 is not only larger at just under ten metre square footprint, but also has a capacity of over 165 cubic metres.

The deconstruction of the old Megalift and installation of the new XO-500 took just seven days in September, enabling the parts department to begin using the new machine with minimal disruption as soon as it had been refilled.

Gerald Webb, Parts Manager for the Lorry Cranes division, commented: "The increased capacity of the new machine will not only release valuable storage space for additional items in the stores, but its faster electronic lift system will also improve efficiency and speed up response times. This, in turn, will have a positive impact on the aftersales service we provide to customers, offering a dedicated ordering helpline with 90 per cent of parts in stock and a 24-hour delivery service from warehouse to customer."

We are now looking towards the future, with a view to installing an automatic picking process to expedite the service provided by the Lorry Cranes Aftersales department even further."



ENERGY, FIRE & SECURITY
NEW 248kwp SOLAR INSTALLATION AT T H WHITE DEVIZES OFFICES

September saw the big switch-on of our fourth T H WHITE solar system to be installed on one of our own buildings, this time on our new Nursteed Road campus which comprises the buildings which house the Energy Fire and Security, Cranes and Projects Division buildings.

The system was design and constructed by our own solar engineering team using solar panels and inverters from our partners Hanwha Qcells and Fronius respectively.

In total the system uses 928 panels and has a peak output of 248.48kwp, able to generate 232,000units of electricity a year.

We expect the system to provide enough electricity to make the buildings self-sufficient in some months of the year and overall make a significant dent in our electricity overheads.

The system will save 80 tonnes of Carbon a year alone, which is important

for our ISO50001 and ESOS energy management accreditation and is part of a range of measures we have incorporated in our renovation of the site. These have included new insulated roof panels, low energy lighting, high efficiency gas boilers, PIR lighting controls, energy efficiency glazing.

T H WHITE Energy Fire and Security is still an active installer of solar systems and we provide a comprehensive range of solar maintenance and cleaning services. Call us on 01380 726656.



T H WHITE Country Stores

London Road, Marlborough SN8 2RN
Mon-Fri: 8am - 6pm Sat: 8am - 5.30pm
Sundays & Bank Holidays: 10am - 4pm
Tel: 01672 518408

WINTER WARMERS
Extensive range of coats and waterproofs in-store now!



MAKE A SPLASH!
Huge wellie selection - choose your style!

Knockdown, Tetbury GL8 8QY
Mon-Fri: 8am - 5.30pm
Sat: 8am - 12 Noon
Sundays & Bank Holidays: Closed
Tel: 01454 238181

MACHINERY IMPORTS



professionals. We have a long association with the Ferris UK team and now that the brand is imported and distributed by T H WHITE Machinery Imports, we are delighted with the support, focus, investment and dedication they will bring to the brand.

“It is important to have the full support of our suppliers on an exclusive basis and this is what we have with the Ferris UK team at T H WHITE.”

GROUND CARE



SERVICE DEALER AWARD
T H WHITE Groundcare has won the 2017 Textron UK and Ireland Premier Service Dealer of the Year award, as well as a Certificate of Commendation in the Proturf Dealer of the Year Awards.

The awards were made on 11 October when representatives of the T H WHITE Groundcare team attended a UK Dealer Conference staged by Textron Specialized Vehicles at the Crowne Plaza hotel in Colchester.

Textron Specialized Vehicles (TSV) is a global manufacturer with subsidiary brands including Ransomes, Jacobsen, E-Z-GO, Cushman and more in the UK. During the conference attendees were given an update on future products from the TSV group and the opportunity to see the machinery up close, including the new MAR series of mowers, the HM600 and the ELITE golf car range.

TRAINING VISIT TO THE NETHERLANDS

T H WHITE Machinery Imports was delighted to organise a visit to the Briggs and Stratton Centre of Excellence in the Netherlands recently for Groundcare staff at dealer partner Ernest Doe.

16 delegates from Doe's Groundcare division visited the Briggs and Stratton facility in Roermond, to learn more about the full range of Ferris products now available through the new UK importer and distributor, T H WHITE Machinery Imports Ltd.

During the trip, the team was given a tour of the extensive facilities as well as business updates from Clive Carter, General Manager for the Ferris, Wright and Spider brands at T H WHITE, and Gerd Jan-Driessen, Business Development Manager for Ferris Commercial Products. On hand to provide detailed sales training on all the Ferris products were Dennie Smeets and Tony Doe, who gave an extensive analysis of the ICD desk system and patented IS

suspension system.

Ernest Doe's groundcare team was also treated to a preview of new products from Ferris, including the SRS Stander models and the new Ferris 400S light commercial, zero-turn mower, which will be officially unveiled at Saltex in November. As part of the training, delegates could ride and drive all products on the specially designed Briggs and Stratton test grounds, as well as cutting grass and taking part in a time trial competition on a Ferris 3200 with a 72in deck.

Commenting on the visit, Clive Carter said: "This was an important sales training event for one of our major dealer partners. Ensuring that the Ernest Doe team is fully up to speed with our products is part of our overall growth strategy over the long term."

Andy Turbin, General Sales Manager for Ernest Doe, added: "The event was really beneficial in terms of supporting and training our team of groundcare

T H WHITE PROJECTS

POST HARVEST INSPECTION AND REPAIR

**MATERIALS PROCESSING, DRYING, BULK STORAGE
 AFTERMARKET CUSTOMER SERVICE AND SUPPORT**

Contact us now on 01380 723040 and ask for Kevin Alnwick or send a mail to cssprojects@thwhite.co.uk

After your plant has worked hard during the harvest period it's time to get it inspected, serviced and repaired if necessary ready for future operation.

- Health Check
- Detailed Report
- Spare Parts Sourcing
- Maintenance Plan
- Service Contract
- Free Advice
- Free Estimates
- Competitive Rates
- Safety Awareness

GRAIN STORE EMERGENCY OUT OF HOURS HOTLINE: 07919 394602

**CALL US NOW AND
 BE PREPARED**

GROUND CARE



MONEY-SAVING LITHIUM

Yet again E-Z-GO has revolutionized electric golf cars with its ELITE™ Series vehicles, powered by Samsung SDI lithium technology.

With high-efficiency, zero-maintenance battery power and an unprecedented five-year, unlimited-amp-hour warranty, ELITE Series vehicles are over 50 per cent more efficient than key rivals, giving you the lowest operating costs the industry has ever seen. The batteries are half the size and a fraction of the weight of lead acid, taking a big load off your turf. The lithium technology is also a reliable power source that doesn't fade over time. Whether it's a new or five-year-old vehicle, ELITE vehicles will give you and your golfers all the acceleration and hill-climbing power they could want.

For the full money-saving story, contact your T H WHITE Groundcare branch.

AGRICULTURE



PLOUGHING - AS IT USED TO BE
Once again the Avebury & District Ploughing Match proved a highly popular and nostalgic event.

Held this year on 23 September at David Hues' farm near Beckhampton, the fair-weather day produced a fine showing of vintage machinery with several splendid Fords and Fordsons of different eras, not to mention a mildly competitive atmosphere of bonhomie! Thanks are due to the Committee for organising the event and the Hues family for hosting it. Look out for next year's ploughing match in September - date to be announced.



**KEEPING YOU
 SAFE & SECURE**

Access Control systems

From simple pinpad and swipe units to fingerprint biometric entry modules we can control access to any size of property, including those with restricted areas or secure rooms.



Intruder Alarms

From bells only to fully policed, monitored systems. We can install the right system tailored to you or your insurance company's requirements. Already have a system? T H WHITE can carry out your annual tests, with a friendly face and a service you can trust.



Fire Alarms

Business owner? Landlord? Health and safety manager? Our surveyors are fully accredited in system design and can work with you on any project to make sure you comply with the latest regulations.



Fire Extinguishers

We offer supply and maintenance of fire fighting equipment, together with honest and accurate advice to keep you safe and compliant with the latest regulations. We also offer safety signage and accessories such as cabinets, vehicle boxes and escape ladders.



CCTV & IP Cameras

For security, health and safety or machinery monitoring, we have the system for you. From fully HD conversions of existing systems to IP set ups we can future proof your CCTV installation. Coupled with our smart phone technologies you can monitor your system from anywhere in the world.



Electric Gates & Barriers

From bespoke domestic style electrical gates to commercial barriers and bollards. Physical security combined with security systems enhance the protection of sites and stop would-be intruders in their tracks.



Call us today for a free, no obligation survey

**T H WHITE
 ENERGY, FIRE
 & SECURITY**

01380 726656
thwhitesecurityandfire.co.uk



2014 Fiat Panda 1.2 Easy, VN64 WZV, Black, 26,000 miles, £4,950. Air Conditioning with Pollen Filter, Radio/CD/MP3, Electric Windows, One Owner, Full Service History.



2016 Fiat Panda 1.2 Pop, VK66 SNX, Red, 2,000 miles, £5,950. Ex-Demonstrator, Start/Stop, Radio/CD/MP3, Hill Holder, Electric Front Windows, Anti Whiplash Head Restraints, TPMS.



2017 Fiat 500 1.2 S, VA66 CHO, Blue, 4,625 miles, £9,650. Air Conditioning, Start/Stop, Rear Parking Sensors, Cruise, Front Seats with Memory, Electric Windows, Hill Holder, Start/Stop, Parking Sensors.



2017 Fiat 500 1.2 Lounge, VF17 LFX, Coral, 30 miles only, £10,900. Air Conditioning, Front Seats with Memory, Fixed Glass Sunroof with Blind, Electric Windows, Hill Holder, Start/Stop, Parking Sensors.



2016 Fiat 500C 1.2 Lounge, WX16 XSH, Blue, 8,608 miles, £9,950. Leather Interior, 5in Touchscreen, Satnav, Air Conditioning, Front Seats with Memory, Start/Stop, Rear Parking Sensors, Hill Holder.



2015 Fiat 500 1.2 Lounge, VK65 WHT, White, 29,700 miles, £6,950. Fixed Glass Sunroof with Sunblind, 5in Touchscreen, Satnav, Electric Front Windows, Rear Parking Sensors, 15in Alloys.



2017 Fiat 500C 1.2 S, VF17 LGD, Red, 20 miles only, £13,650. Pre-Reg - Save £3,140! 16in Alloys, 7in TFT Screen, Air Conditioning, Cruise, Start/Stop, Rear Parking Sensors, Dark Tinted Glass, TPMS.



2017 Fiat 500X MultiJet Pop Star, Unreg, Bronze, 10 miles only, £19,450. Cancelled Order! Dual Zone Climate Control, Comfort Pack, Satnav, 5in Touchscreen, DAB Audio, Parking Sensors.



2016 Fiat 500X 1.6 MultiJet Pop Star, VX16 VOH, Grey, 7,325 miles, £11,950. Auto Climate Control, Cruise, Start/Stop, DAB Audio, 17in Alloy Wheels, Rear Parking Sensor, Hill Holder.



2014 Fiat 500L 1.6 MultiJet Trekking, WN14 LWU, Green, 27,200 miles, £8,450. Dark Tinted Windows, Air Conditioning, Rain Sensor, Cloth/Leather, 17in Alloys, 5in Touchscreen, Cruise, PDC.



2017 Alfa Romeo Giulia 2.9 Biturbo V6 Quadrifoglio, VE17 FYY, Black, 2,650 miles, £57,450. 510 bhp, Leather/Alcantara, Harman Kardon, 5-Hole Alloys, Yellow Callipers, Climate Control.



2017 Alfa Romeo Giulia 2.2 TD Speciale, VU17 AYF, Alfa Red, 8,000 miles, £30,595. Climate Pack, Convenience Pack, Driver Assistance Pack, Auto Air Conditioning, 6-Way Power Seats.



2017 Alfa Romeo Giulietta 1.7 TBI Veloce BTCC Signed Edition, Delivery Miles, £29,950. One-off edition in Team Handy Motorsport Colours signed by BTCC driver Rob Austin. Many Extras, Save £3.5k!



2017 Alfa Romeo Giulietta 1.6 JTDM-2 Super, VU17 AYJ, Grey, 7,500 miles, £17,495. Red Leather, Visibility Pack, Dark Tinted Windows, Comfort Pack, Aluminium Pedals, Turbine Alloys.



2014 Alfa Romeo MiTo 0.9 TB TwinAir Sportiva, VN64 UJC, Black, 19,575 miles, £8,450. Climate Control, Cruise, Radio/CD/MP3, Bluetooth, 18in Alloys, Tinted Glass, Electric Windows, Alarm.



2014 Abarth 500 1.4 T-Jet MTA Auto, VA14 BVT, Grey, 7,600 miles, £10,450. Climate control, 5-spoke Abarth Alloy Wheels, Electric Front Windows, Hill Holder, Radio/CD/MP3.



2016 Abarth 595 1.4 T-Jet, VA16 DDY, Red, 8,100 miles, £10,950. Air Conditioning, Electric Front Windows, Blue&Me - Bluetooth, Tinted Glass, Radio/CD/MP3, TPMS, Full Dealer Service History.



2016 Abarth 695 1.4 T-Jet Biposto Record, VR66 GSU, Yellow, 136 miles only, £24,450. Leather and Alcantara Upholstery, Tinted Windows, Sabell Carbon Shell Seats, 18in lightened O.Z. Alloys.



2017 Abarth 124 Spider Roadster 1.4 MultiAir, VU17 AYB, Blue, 2,000 miles, £26,950. Ex-Demo, Bose Audio, Visibility Pack, Abarth Leather, Heated Seats, Air Conditioning, 17in Alloys, Alarm.



2017 Jeep Grand Cherokee 6.4 Hemi SRT, VE17 OXL, Red, 4,500 miles only, £46,995. £23,000 Saving! Nappa Leather & Suede Heated Ventilated Seats, Rain Sensor, Rear View Camera, Alarm.



2017 Jeep Cherokee 2.2 MultiJet II, VA66 MVL, Recon Green, 9,000 miles, £26,995. 75th Anniversary Model, Panoramic Sunroof, Park Assist, Morocco Nappa Leather, Auto Aircon, Rain Sensor, Alarm.



2017 Jeep Renegade 2.0 MultiJet II Limited, VU17 YYE, Granite Crystal, 6,500 miles, £23,950. 8-Way Power Seats, MySky Open Air Roof, Function Pack, Parking Pack, Heated Front Seats, DAB.



2015 Jeep Renegade 1.6 MultiJet Sport, VN15 HNJ, Pastel Red, 28,098 miles, £10,429. Air Conditioning, Power Windows, DAB Audio, Stop/Start, Hill Start Assist, 16in Alloys, Premium Alarm.



2016 Jeep Renegade 1.6 MultiJet II Longitude, VO66 YHG, Granite Crystal, 11,786 miles, £13,995. Ex-Demo, Air Conditioning, DAB, Cruise, DAB, Satnav, 17in Alloys, Power Windows, Start/Stop.



2017 Jeep Grand Cherokee 6.4 Hemi SRT, VE17 OXL, Red, 1,200 miles only, £50,995. £19,000 Saving! Nappa Leather & Suede Heated Ventilated Seats, Rain Sensor, Rear View Camera, Alarm.



MOTOR GROUP



FULLBACK CROSS IS STRIKING LIFESTYLE PICKUP

The rugged Fiat Fullback pickup has justifiably earned its place in a competitive market. Now, the new Fiat Fullback Cross is a striking new variation combining enhanced style and versatility for those who have active working and leisure lives.

On the outside there are eye-catching styling upgrades, including a new grille with matt black inserts, a satin silver skid plate, stunning 17-inch six-spoke black alloy wheels, extensive black detailing and larger side steps. An exclusive textured black sport bar also gives the Fullback Cross a sleeker silhouette and underlines its dynamic profile. The model's individual look is completed by the new all-black cargo space, with the Fiat logo in relief.

The spacious double cab Fullback

Cross comes with a 2.4-litre common rail turbodiesel engine and develops 180hp (133 kW) and a maximum torque of 430Nm. There are also two transmissions available: six-speed manual or five-speed automatic with sporty sequential mode and dashboard commands.

The Fullback is equipped with an



electronic selector allowing drivers to engage the all-wheel drive system, with a choice of four modes. A central differential, supported by three electronically-controlled clutch modes, manages torque transmission to the wheels in real time based on road conditions and speed.

The Fullback Cross features a wealth of standard safety equipment including ABS with EBD, TSA (Trailer Stability Assist – a system which aids stability during towing), LDW (Lane Departure Warning), rain and dusk sensors, seven airbags and cruise control. Bi-xenon headlights, front fog lights and LED daytime running lights are also included as standard.

Inside, the ambience is anything but utilitarian. The luxurious interior features leather seats, heated front seats with six-way electric adjustment on the driver's side, leather covered steering wheel rim and gear knob, as well as automatic dual zone climate control. The infotainment equipment includes a 7-inch touchscreen with DAB CD/MP3 Radio, Bluetooth and USB port. A rear parking camera and satellite navigation complete the interior set-up.

The Fiat Fullback Cross will get you noticed and offers virtually everything you will ever need in one vehicle. With prices starting at £26,495 it's a deal, and business contract hire packages are available too (subject to stats, terms & conditions). For all the details visit the T H WHITE Fiat Group Brand Centre in Swindon, or call 01793 393319.



ALFA'S RETURN TO BTCC CELEBRATED

Looking ahead to 2018 and the return of Alfa Romeo to the British Touring Car Championship (BTCC), a special event was held at the T H WHITE Alfa Romeo dealership in Swindon on 23 September. Scores of fans seized the opportunity to enjoy a Q&A session with Rob Austin – who will drive an Alfa Romeo Giulietta in the 2018 Championship – and team owner and former driver Simon Belcher, hosted by 1992 BTCC Champion and ITV4 commentator Tim Harvey.

Fans packed the Forest Park Road premises to see the Alfa Romeo Giulietta showcar, which appeared live on ITV4 at the Rockingham race meeting in September where Handy Motorsport revealed the 2018 tie-up with the Alfa Romeo Dealer Council. T H WHITE, a key team sponsor and part of the Dealer Council, has been instrumental in bringing the deal together.

The photo shows Rob Austin signing the special Giulietta 'Signature Edition', now for sale (see ad on left).

T H WHITE AGRICULTURE

GOLD

For orders placed before 30 November 2017, invoiced before 28 February 2018

20% OFF

Labour and In-Stock Parts

AGRICULTURAL EQUIPMENT WINTER SERVICE 2017-18

SILVER

For orders placed before 30 December 2017, invoiced before 31 March 2018

15% OFF

Labour and In-Stock Parts

We will service ANY make, ANY model, ANY age

BRONZE

For orders placed before 15 February 2018, invoiced before 30 April 2018

10% OFF

Labour and In-Stock Parts

Contact your local branch NOW. Normal monthly terms apply for all work invoiced. Discount only applies to work booked with associated labour and parts.

Extended payment terms available subject to credit approval. T H WHITE Terms & Conditions apply to all Winter Service packages.

BIG NAMES IN USED EQUIPMENT



2010 New Holland FR9060, 4wd, grass & maize **£78,500 AT**



2000 New Holland FX38, 3317 cutting hrs, 4650 engine hrs, crop processor **£22,000 RM**



2004 New Holland 8 Row Maize Header, to fit New Holland FR. Very good condition **£15,000 AT**



2016 New Holland BB1290 standard Big Baler, steering axle, extended warranty, 14000 bales **£72,000 BW**



2011 New Holland BB9060 Packer Cutter Baler, 42000 bales, VGC **£37,500 AT**



2002 New Holland BB940 Big Baler, 92000 Bales, good condition for age **£17,500 AT**



New Holland BC5060 Baler, like new only done small amount of work **£10,200 RM**



2002 Claas 2200 Big Square Baler, 120 x 70 bale, rotor feed, single axle, good working order **£12,000 JW**



2013 New Holland T7.200 Auto Command, sidewinder, front linkage, 2300 hrs **£55,000 BW**



2014 New Holland T6.175, c/w front & cab suspension, 50k with air, Michelin tyres, 2401 hrs **£38,500 MH**



2016 New Holland TD5.95, 2wd, 12 x 12 powershuttle, 1549 hrs, good condition **£14,500 BW**



2011 Manitou MLT 634T, 120 LSU PS, pin & cone, excellent condition **£31,000 JW**



2017 Schuitemaker Feedo 50.8 Feeder Wagon, variable floor speed, beaters & cross conveyor **£14,000 BW**



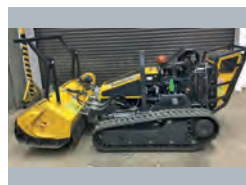
2012 Kuhn Trailed Sprayer, 3200 RHPA, 24 mtr booms alloy, 2800 ltr, auto steer drawbar **£18,000 SC**



2015 Kuhn FC313DF, front mounted 8 disc cutterbar, 3.1m cut, steel condition, fast fit blades **£7,800 BW**



2013, Kuhn GF7902 Mounted Tedder, 7.8m 8 hyd folding rotors **£7,000 BW**



EX-HIRE - McConel Robocut, 124 hrs c/w flail head 1300, option to buy Mulcher **£33,500 RM**



EX-DEMO - 2017 Honda UTV 700M2, 2/4wd and difflock, 2 year warranty, fitted towball, **£10,250 TR**

Sales Hotline: **01373 465941** (Mon-Fri 08.00-17.00) Out of hours: **07710 985957**

New: www.thwhiteagriculture.co.uk Used: www.thwhiteused.co.uk

MACHINERY

Hardi 18m Sprayer c/w MOT, VGC **£6,950 RM**
 2011 Kuhn Euromix 1460, horizontal augers, weigher, 5 tooth knives, hopper ext **£6,500 RL**
 2014 Opico Sward Slitter, ex-display **£6,250 RB**
 2008 Kuhn Primor 2060H Straw Chopper, good working order **£6,500 RM**
 2011 Teagle 8080SC Straw Chopper, electronic controls **£5,700 RM**
 2012 Kuhn FC313F, front mounted 8 disc cutterbar, 3.1m cut, fast fit tines, nylon finger condition 30%, wide swath kit, front tyres 50%, rear tyres 50% **£5,500 BW**
 Kuhn MM121 5 Furrow Plough **£4,000 BW**
 2015 Kuhn GMD240 Disc Mower, done very little work, 200 acres from new **£4,000 RD**

RB Ray Bennett 07710 985957
 PC Paul Churches 07702 724308
 SCT Steve Clucas-Tomlinson 07860 593339
 SC Stuart Crook 07831 249489
 AD Andy Daffurn 07860 331023
 CD Colin Davis 07860 401211

2001 Kuhn FC283 2.8m Mower Conditioner, good condition **£2,200 JW**
 2006 Maschio Power Harrow, 1.8m **£2,000 RD**
 2005 John Deere 324 Mower Conditioner, exceptional condition and serviced ready to go **£3,700 AD**
 2014 Husqvarna HM P524 Outfront Mower, hydrostatic 4wd transmission, 112cm combi cutting deck **£5,500 SK**
 Ransomes T-Plex 180 Triple Cylinder Mower, very good condition **£2,750 SK**
 EX-DEMO - Robomow RS630 mower, base station, wire & pegs, mower will come with all accessories to self-install **£1,800 SK**
 Choice of 2 - 2016 New Holland Trimble 372 RTK radio to fit Trimble 372 receiver **£1,450 RM**

RD Rhodri Davies 07775 003460
 BG Bob Gallop 07831 883734
 MH Matt Hooper 07824 607087
 SK Simon Knight 07860 712963
 RL Ryan Lanfear 07769 248602
 AM Adrian Moore 07860 247367

ATVs

2016 Honda TRX500DCT, auto gearbox, power steering, road legal kit, logic wiring, 50mm ball hitch, VGC **£6,750 SK**
 2013 Honda TRX420FM, manual heat change, digital dash, liquid cooled, front disc brakes, 2/4wd, towball, low hours. Low kms, AE 500 wiring kit for sprayer, fully serviced, new tyres all round **£3,950 TR**
 2001, Kawasaki KLF 300, 164 miles from new, one owner, first class condition **£2,100 AD**

WANTED

Used DeLaval milking equipment, mainly electronic Alpro computerised systems with or without in parlour feeding but most considered **Contact AM**

RM Richard Morgan 07831 351379
 SP Simon Pratt 07909 895502
 TR Tim Rochfort 07973 911934
 AT Andy Taylor 07831 255811
 BW Ben Willcox 07826 917955
 JW Joe Woolley 07818 077591

All items offered are subject to remaining unsold. Prices shown do not include VAT.

